



STEMCO GAFF products provide superior mechanical properties, outstanding chemical resistance, improved design features, and more extensive part coverage.

Freightliner & Western Star
To suit



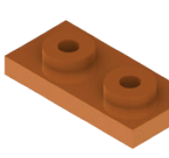
11074
FRONT MOTOR MOUNT
SUIT WESTERN STAR & FREIGHTLINER
KIT 11090 INCLUDES BOLTS, NUTS, WASHERS
OE# BCD28945-1, BCD27651-1, BCD26704-1, J2124613, 01-33963-000, 01-33964-000



11090
FRONT MOTOR MOUNT KIT
SUIT WESTERN STAR & FREIGHTLINER
INCLUDES 1x 11074, BOLTS, NUTS, WASHERS
OE# BCD28945-1, BCD27651-1, BCD26704-1, J2124613, 01-33963-000, 01-33964-000



11523
REAR MOTOR MOUNT - LOWER
SUIT WESTERN STAR & FREIGHTLINER
USED WITH 1x 12301 UPPER MOUNT
OE# 04-9009996, 12004-3401, 144917156380




12301
REAR MOTOR MOUNT - UPPER
SUIT WESTERN STAR & FREIGHTLINER
USED WITH 2x 11523 LOWER MOUNT
OE# 04-9009997, 12004-3402, 144917168930




11077
REAR MOTOR MOUNT
SUIT FREIGHTLINER
KIT 11089 INCLUDES BOLTS, NUTS & WASHERS
OE# BCD28805-1, BCD27477-2, BCD27330-1



11089
REAR MOTOR MOUNT KIT
SUIT FREIGHTLINER
INCLUDES 2x 11077, BOLTS, NUTS, WASHERS
OE# BCD28805-1, BCD27477-2, BCD27330-1




11149
REAR MOTOR MOUNT
SUIT WESTERN STAR & FREIGHTLINER
OE# 01-34070-001, 01-34070-000, J2618521



11018
FRONT MOTOR MOUNT KIT
SUIT FREIGHTLINER
INCLUDES 2x MOUNTS & SLEEVE
OE# SSB3310017, SB3310018
TLB1337155, TLB1337145, 01-15047-000



11065
REAR MOTOR MOUNT
SUIT FREIGHTLINER FL SERIES
OE# J20941-6, J20941-5, J20941-4
J20941-67, J20941-36, J20941-13



11113
FRONT MOTOR MOUNT
SUIT FREIGHTLINER FL SERIES
OE# J19791-3, J19791-1, A-680-241-02-18
J20120-4, J20120-1, 01-33243-000



11725
MOTOR MOUNT
SUIT FREIGHTLINER
OE# CBA24-650-17, CBA24-650-50A
CBA2465050, CBA24650



18102
FRONT MOTOR MOUNT
SUIT WESTERN STAR
OE# 12005-3403, CB1125-4, CB1125-2
05-169192, 04-9009991, M700-50



11705
CAB MOUNT
SUIT WESTERN STAR
OE# 66001-3403, CB1124-5, CB1124-4
CB1124-2



11533
CAB & RADIATOR MOUNT
SUIT WESTERN STAR & FREIGHTLINER
OE# 04-9009990, 12005-3414, J6210-46




11707
MOTOR MOUNT
SUIT WESTERN STAR & FREIGHTLINER
OE# CBA28-1050-1, CBA28-1050



11021
RADIATOR MOUNT
SUIT WESTERN STAR & FREIGHTLINER
INCLUDES 2x MOUNTS & SLEEVE
OE# 05-16070-000, S-19782
A-681-504-00-82



11008
LOWER CAB MOUNT
SUIT FREIGHTLINER
INCLUDED IN KIT 11086
OE# A-681-891-00-01, 18-43637-000



11009
UPPER CAB MOUNT
SUIT FREIGHTLINER
INCLUDED IN KIT 11086
OE# A-681-890-00-01, 18-43636-000




11086
CAB MOUNT KIT
SUIT FREIGHTLINER
INCLUDES 2x 11008, 2x 11009
BOLTS, NUTS & WASHERS



11019
HOOD HINGE BUSH
SUIT FREIGHTLINER
OE# J17700-5, 17-20709-000



11020
HOOD GUIDE
SUIT FREIGHTLINER
OE# A17-10464-001



18015
HOOD & CAB MOUNT
SUIT WESTERN STAR & FREIGHTLINER
OE# 67009-3442, 18-41025-000
CB2202-12



11096
HOOD LATCH - HOOK
SUIT WESTERN STAR & FREIGHTLINER
USE WITH LATCH 11102 & 11176
OE# 17-12434-000



11097
HOOD LATCH - HOOK
SUIT WESTERN STAR & FREIGHTLINER
USE WITH LATCH 12365 & 11134
OE# 17-14781-000, 681-887-24-14



12365
HOOD LATCH - FENDER MOUNTED
SUIT WESTERN STAR & FREIGHTLINER
ASSY 11134 INCLUDES BRACKET
OE# 67101-3417



11134
HOOD LATCH - FENDER MOUNTED
SUIT WESTERN STAR & FREIGHTLINER
INCLUDES BRACKET
OE# 67101-3417



11102
HOOD LATCH - CAB MOUNTED
SUIT WESTERN STAR & FREIGHTLINER
ASSY 11176 INCLUDES BRACKET
OE# 67101-3419, 17-12438-000



11176
HOOD LATCH - CAB MOUNTED
SUIT WESTERN STAR & FREIGHTLINER
INCLUDES BRACKET
OE# 67101-3419, 17-12438-000



STEMCO GAFF products provide superior mechanical properties, outstanding chemical resistance, improved design features, and more extensive part coverage.

To suit **Freightliner & Western Star**



30507
SHOCK ABSORBER BUSH
SUIT WESTERN STAR & FREIGHTLINER
OE# 37302-3403, M401754, 16-10722-002
16-10722-001, 16-10722-000, 73D2002



11005
DRIVE SPRING PIN BUSH
SUIT WESTERN STAR & FREIGHTLINER
AIRLINER FASII SUSPENSION
OE# 16-18035-000, 16-22080-000



13520
TORQUE ROD BUSH
SUIT WESTERN STAR & FREIGHTLINER
AIRLINER FASII LARGER REPLACEABLE BUSH
COMPLETE TORQUE ROD ASSY IS 11152
OE# 44695-000L, 44695-000, IPC227720



13518
TORQUE ROD BUSH
SUIT WESTERN STAR & FREIGHTLINER
OE# 44697-000L, 44697-000, IPC229610



11066
STEER SPRING PIN BUSH
SUIT WESTERN STAR & FREIGHTLINER
OE BOLT & BUSH STYLE
OE# 16-17769-000, A-680-322-01-50



11083
DRIVE SPRING PIN BUSH
SUIT WESTERN STAR & FREIGHTLINER
AIRLINER FASII SUSPENSION (ANTI-WALK)
OE# 16-18035-000, 16-22080-000



83520
TORQUE ROD BUSH
SUIT WESTERN STAR & FREIGHTLINER
AIRLINER FASII LARGER REPLACEABLE BUSH
EASY MOUNT VERSION OF 13520
OE# 44695-000L, 44695-000, IPC227720



11544
EXHAUST MOUNT
SUIT FREIGHTLINER
OE# CB1121-10



11094
STEER SPRING PIN BUSH
SUIT WESTERN STAR & FREIGHTLINER
UPGRADE & REPLACEMENT TO
OE BOLT & BUSH STYLE 11066
OE# 16-21919-000, 16-18023-000



11161
DRIVE SPRING PIN BUSH TOOL
SUIT WESTERN STAR & FREIGHTLINER
AIRLINER FASII SUSPENSION
INSTALL & REMOVAL OF OEM BUSHES ALSO
SUITS GAFF 11005 & 11083



11152
TORQUE ROD ASSEMBLY
SUIT WESTERN STAR & FREIGHTLINER
AIRLINER FASII FITTED WITH LARGER
REPLACEABLE BUSHES 13520
OE# 16-15632-000, TR46-41000



40074
CENTRE BEARING ASSY
SUIT 1810 APPLICATION
OE# CB2106611XSA, 500323XB
CB2108751XSA, 5003326XB



11168
STEER SPRING PIN BUSH TOOL
SUIT WESTERN STAR & FREIGHTLINER
INSTALL & REMOVAL OF OEM BUSHES
ALSO SUITS GAFF 11066 & 11094



11004
TORQUE ROD BUSH
SUIT WESTERN STAR & FREIGHTLINER
AIRLINER FASII SMALLER REPLACEABLE BUSH
COMPLETE TORQUE ROD ASSY IS 11081
OE# 47691-000L, 47691-000



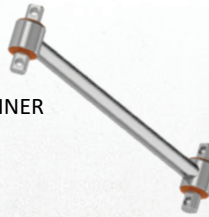
18551
INSTALL & REMOVAL TOOL
SUIT WESTERN STAR & FREIGHTLINER
AIRLINER FASII SUSPENSION
INSTALL & REMOVAL OF OEM BUSHES
ALSO SUITS GAFF 13520 & 83520



40075
CENTRE BEARING ASSY
SUIT 1710 APPLICATION
OE# CB2101211XSA, 2101211XB



18600
STEER SPRING SHACKLE
SUIT WESTERN STAR & FREIGHTLINER
USED WITH BUSHES 11066 & 11094
OE# 16-11890-002, 16-11890-001
16-11890-000



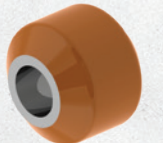
11081
TORQUE ROD ASSEMBLY
SUIT WESTERN STAR & FREIGHTLINER
AIRLINER FASII FITTED WITH SMALLER
REPLACEABLE BUSHES 11004
OE# 16-16749-002, 16-16749-000
16-18972-000, 16-21340-001, 681-326-72-16



13683
TORQUE ROD END ASSEMBLY
SUIT WESTERN STAR & FREIGHTLINER
AIRLINER FASII LARGER REPLACEABLE BUSH
EASY MOUNT VERSION IS 13790
OE# IPC928630, 44610



18455
WHEEL CHOCK - STANDARD
WIDTH 140MM
LENGTH 220MM
HEIGHT 165MM



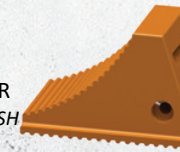
11118
CLUTCH BAR BUSH
SUIT FREIGHTLINER
SUIT OE ROD A02-13110-002
OE# A02-13100-002



11611
SHIFTER BUSHING KIT
SUIT WESTERN STAR & FREIGHTLINER
EATON PRE-DRILLED BUSH INCLUDES PIN
OE# K-3399, K3399



13790
TORQUE ROD END ASSEMBLY
SUIT WESTERN STAR & FREIGHTLINER
AIRLINER FASII LARGER REPLACEABLE BUSH
EASY MOUNT VERSION
OE# IPC928630, 44610



40095
WHEEL CHOCK - LARGE
WIDTH 212MM
LENGTH 305MM
HEIGHT 200MM