

Pro-One Solutions for Australia

INDUSTRY: TRANSPORT

APPLICATION: Truck #1 DAF XF105 2019

854,639 odometer with PACCAR MX13

Truck #2 Western Star 4800 2018

997,499 odometer with Detroit DD15

PRODUCT: Fuel Maximizer (Liquid)

OVERVIEW:

Fuel & AdBlue prices unstable & shooting up overnight causing cost of freight to increase, AdBlue also in short supply (at the time of trial).



Pro-One Solution:

- Fuel Maximizer will improve fuel economy & performance, reduces ash formation & exhaust emissions will adding lubricity to diesel fuels while cleaning fuel system & injectors.
- Customer runs same drivers, with same load & same route every week making it a perfect trial.
- Fuel usage data collected for the 2 weeks before and during the 2 week Fuel Max trial.
- Average Diesel price (at time of trial) was \$2.20 per Litre
Average AdBlue price (at time of trial) was \$1.99 per Litre
Fuel Max price based RRP of P1-32001 3.78L

Data Breakdown:

- Combined distance traveled before Fuel Max trial 25,476kms, distance traveled during trial 26,534. Additional 1,058kms traveled during trial.
- Combined Diesel/AdBlue usage before trial 14,877L Diesel & 358L AdBlue, Usage during trial 12,427L Diesel & 346L Adblue.

Savings:

- Additional 1,058kms traveled. Saving of 2,450L of Diesel & 12L of AdBlue which is a bottom line saving of \$5,413.88.
- Combined bottom line saving of \$0.22 per km including Fuel, AdBlue & Pro-One Fuel Maximizer costs.

Saving of \$5,413.88 or \$0.22 per KM

Less active DPF Regens (DD15), Less AdBlue (MX13), less emissions & less downtime with costly repairs.

INJECTOR SPRAY & CLEANLINESS TEST

Common injector malfunction is caused by carbon build-up, contaminated fuel and lack of lubrication.



Without Fuel Maximizer



With Fuel Maximizer

Pro-One fuel maximizer helps safely remove existing carbon build-up, allowing injectors to operate efficiently.

PRO-ONE FUEL MAXIMIZER

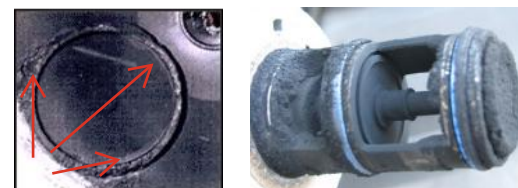
ADVANCED FUEL
CONDITIONING CATALYST



CARBON & SOOT - EGR VALVE RESULTS

Incomplete combustion results in carbon & soot build-up which will:

- Contaminate your oil, clog oil & fuel filters
- Increase oil viscosity & create sludge
- Cause detrimental wear & rob your engine of fuel economy and performance.



Without Fuel Maximizer



With Fuel Maximizer