

TECHNICAL PUBLICATION

STEMCO Steer Axle Hubcap Solutions for MFS-66

9th December 2025

This document provides guidance on selecting the correct hubcap for MFS-66 Steer Axles. Recent observations show variations in snout/nose length and Bolt Circle Diameter (BCD) across MFS axles, particularly the MFS-66 application. Use the following steps to identify your hub configuration.

Step 1: Identify Snout Length



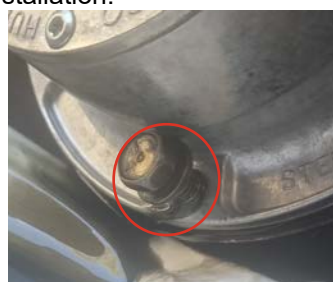
Short Snout
Small gap between mount surface and bearing cup



Long Snout
Large gap between mount surface and bearing cup

Step 2: Identify BCD - Bolt Circle Diameter

The majority of long and short snout hubs on an MFS-66 run a 5-1/2" BCD. Be cautious: Other MFS axles can run either 5-1/2" or 5-9/16" BCD with both a long and short snout. The holes may appear to line up, but when tightening, the bolts may not align correctly or can cross-thread in the hub. Always confirm BCD before installation.



Step 3: Hubcap Selection

Short Snout

With Chrome Dress Cover

Use 4046 (5-1/2") or 4281 (5-1/2" & 5-9/16") Series hubcap for clearance

- 343-4046 Aluminium with Red Rubber Vent Plug (5-1/2" BCD)
- 343-4281 Aluminium with Red Rubber Vent Plug (Multi-fit)
- 356-4046 Aluminium with Sentinel Vent Plug (5-1/2" BCD)
- 356-4281 Aluminium with Sentinel Vent Plug (Multi-fit)
- 357-4046 Aluminium Hi-Temp with Sentinel Vent Plug (5-1/2")
- 366-4009 Composite with Sentinel Vent Plug (5-1/2" BCD)

Without Chrome Dress Cover

Use 4009 (5-1/2") Series hubcap

- 343-4009 Aluminium with Red Rubber Vent Plug (5-1/2" BCD)
- 356-4009 Aluminium with Sentinel Vent Plug (5-1/2" BCD)



Long Snout

With Chrome Dress Cover

Use 4095 (5-1/2") Series hubcap for clearance

- 343-4095 Aluminium with Red Rubber Vent Plug
- 356-4095 Aluminium with Sentinel Vent Plug
- 357-4095 Aluminium Hi-Temp with Sentinel Plug

Without Chrome Dress Cover

Use 4046 & 4009 (5-1/2") Series or 4281 (Multi-fit)

- 343-4009 Aluminium with Red Rubber Vent Plug
- 343-4046 Aluminium with Red Rubber Vent Plug
- 343-4281 Aluminium with Red Rubber Vent Plug
- 356-4009 Aluminium with Sentinel Vent Plug
- 356-4046 Aluminium with Sentinel Vent Plug
- 357-4046 Aluminium Hi-Temp with Sentinel Plug

IMPORTANT INSTALLATION NOTE

With numerous hub types on the market, it is crucial to ensure the hubcap seals correctly, that all bolts are installed and tightened by hand (not with an impact gun), and that the vent plug or hubcap does not make contact with the spindle or axle fastener.

For further information, please contact your STEMCO representative.

Helping Industry Become; More Safe, More Productive, More Sustainable